

Belle Meade

beautiful meadow



The Towers Cottage



Main Floor: **1,903 square feet**
3 bedrooms
2 baths

Second Floor: **1,315 square feet**
1 bedroom
1 bath

Base Price: **\$435,825**

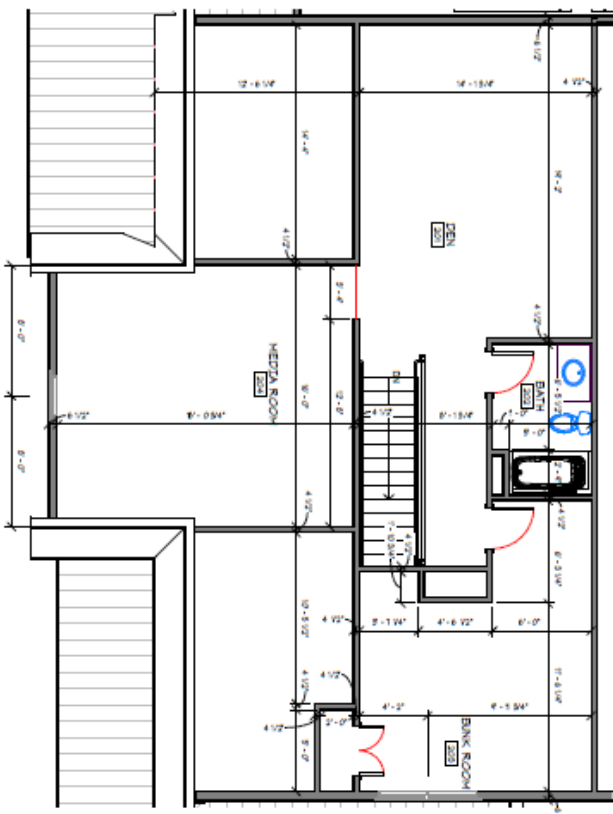
Albert G. Towers and his wife Lucinda migrated to Texas Township . The very first township meeting was hosted by them in their log cabin on April 2, 1838. Mr. Towers was very active in the township being elected as Justice of the Peace by 27 voters in attendance at that first meeting. The TOWERS Cottage, bearing his name, is the largest main floor square footage in Belle Meade. This expansive plan offers three bedroom spaces on the main floor and a centrally located kitchen space for convenience for every corner of the home.



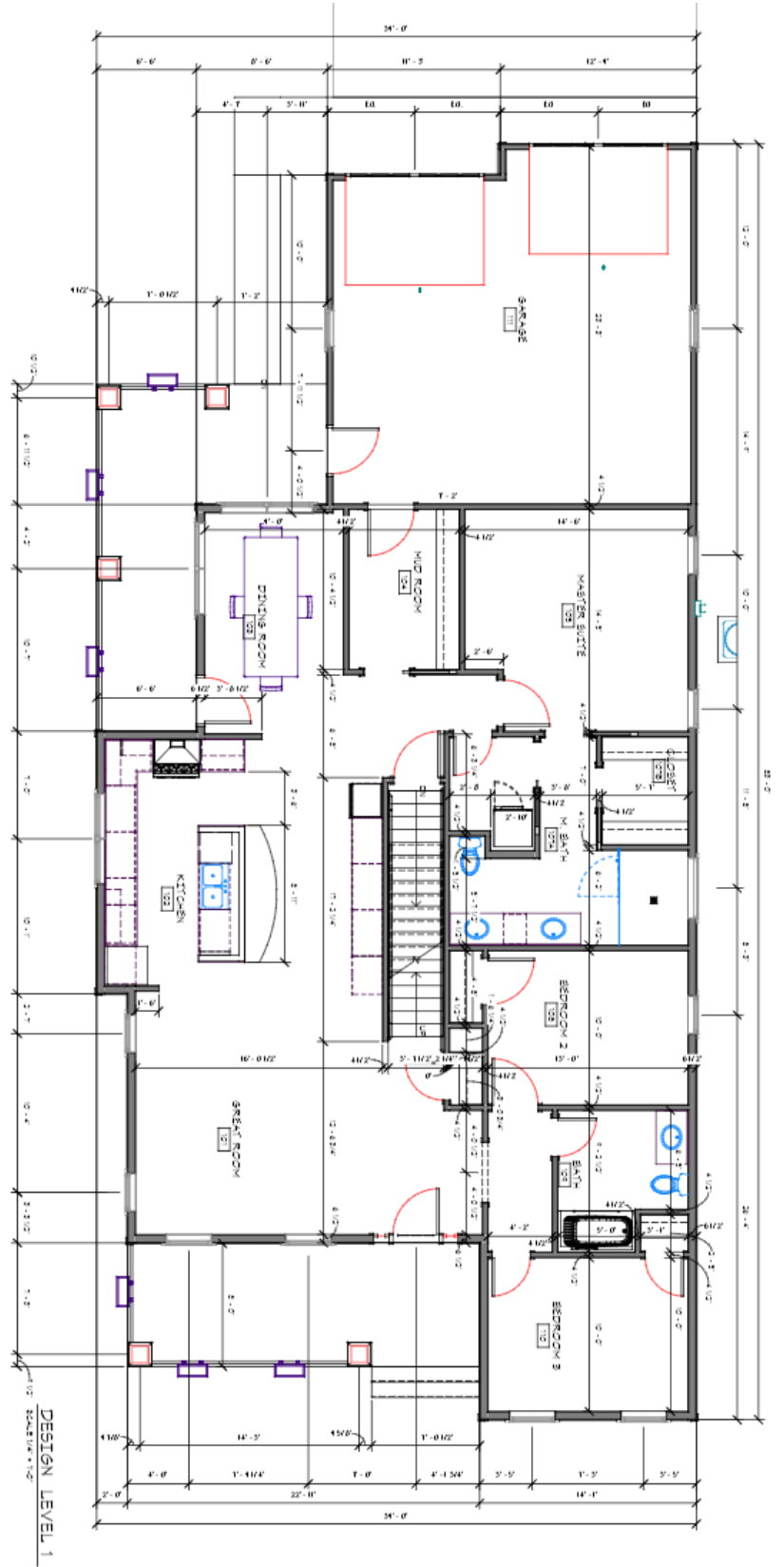
5401 W H Ave
269.552.9090
Kalamazoo, MI 49009
info@visserliving.com
Visserliving.com



The Towers Cottage



DESIGN LEVEL 2
SCALE 1/8" = 1'-0"



DESIGN LEVEL 1
SCALE 1/8" = 1'-0"