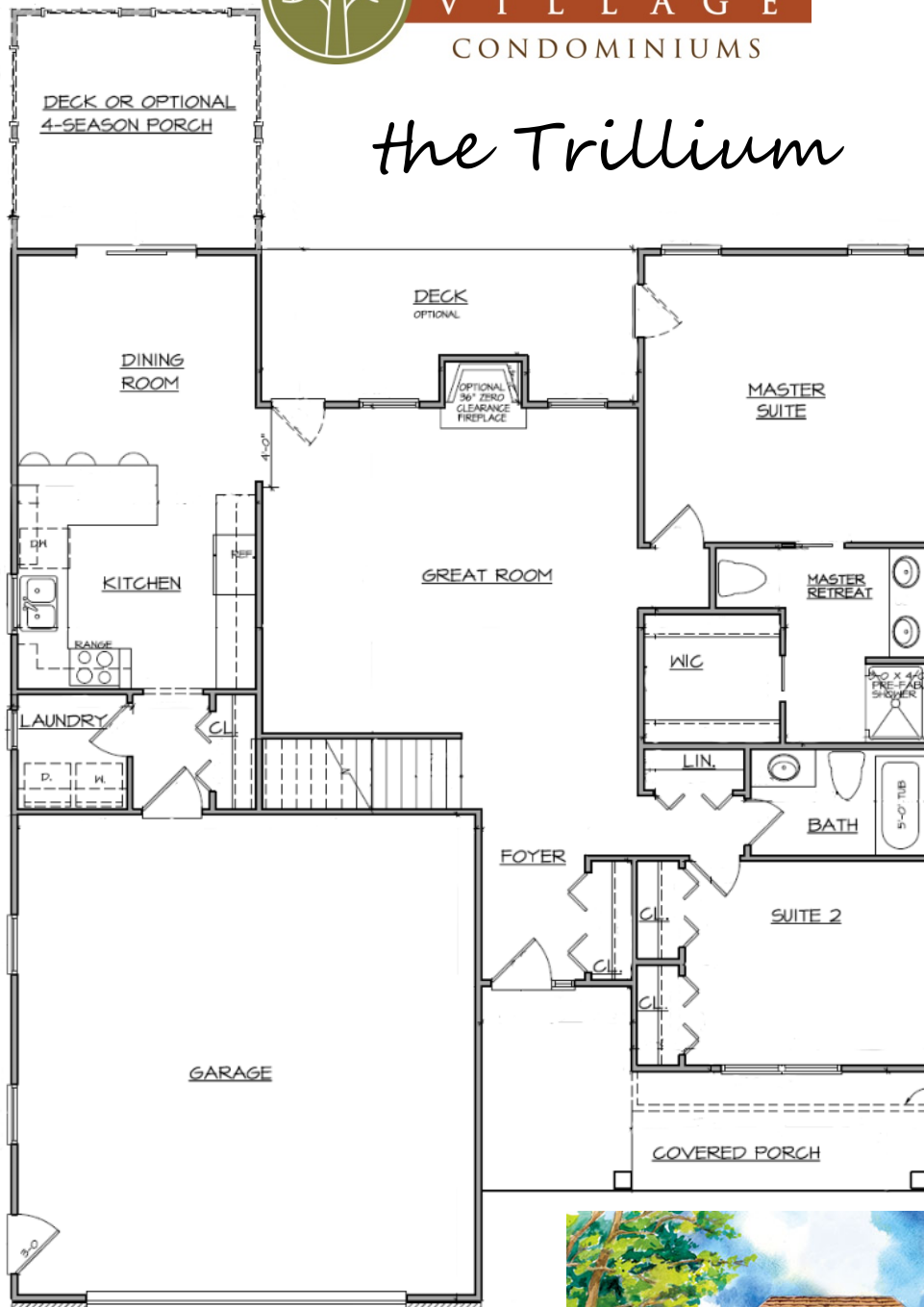




# WESTPORT VILLAGE CONDOMINIUMS

## *the Trillium*



Total Square Feet 1,395

Base price \$332,980

Lot \$46,500 included



Renderings are conceptual and may vary in detail from plans and specifications. Any dimensions shown are approximate. Builder reserves the right to make changes if necessary to improve the product. Price subject to change. ©2020 Visser Construction. All rights reserved